

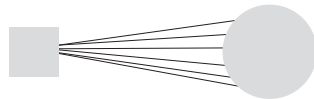


CleanQore

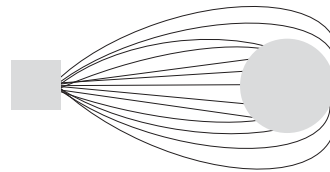
ELECTROSTATIC SPRAY TECHNOLOGY



THE ELECTROSTATIC DIFFERENCE



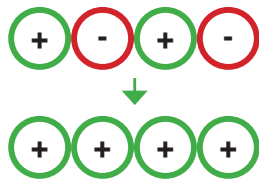
CONVENTIONAL SPRAYER



VICTORY SPRAYER

Electrostatic sprayers change the electrical charge of the particles in whatever solution is sprayed to go from Neutral (+’s and -’s) to either Positive (+) or Negative (-).

ALL POSITIVE



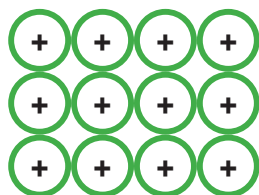
75X THAN GRAVITY

75X

Because of this charge, sprayed charged particles will have an attraction up to 75 times that of gravity and will seek out items to land on versus “floating” in the air.

As the like charged particles land, they avoid colliding in the air or landing on each other, since they have the same charge, so they spread out evenly across all sprayed surfaces providing excellent solution coverage.

NO PILE UP



(TOP VIEW)

COVER ALL SIDES



(SIDE VIEW)

If the sprayed particles have the opposite charge as the material they are sprayed on, the electrical force will even cause the particles to reverse course and coat hidden and hard to reach surfaces that would typically be missed by conventional spraying or wiping.